

# Italian exhibitors at ISSA Interclean



10.11.12.13 MAY 2016 • AMSTERDAM • NL



# TTS MAGIC +

Magic goes on:  
2 trolleys become 1



10-13 May 2016



Stand: 01.431 - Hall 1

With a click you **join**  
**separate** your trolley



See it in action



[www.ttsystem.com](http://www.ttsystem.com)



## The Fair, the Events and the Guide for a stroll through **AMSTERDAM**



[www.cleaningcommunity.net](http://www.cleaningcommunity.net)

Cleaning Community is the site dedicated to the world of professional cleaning, where companies, dealers and experts of the sector can find news and updates. Cleaning Community informs on everything related to the cleaning world with Newsletters and Magazine, in Italy and abroad.

# Floor Plan

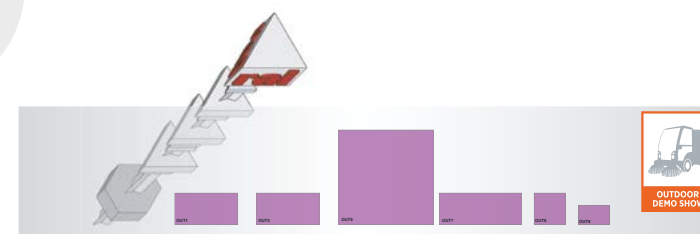
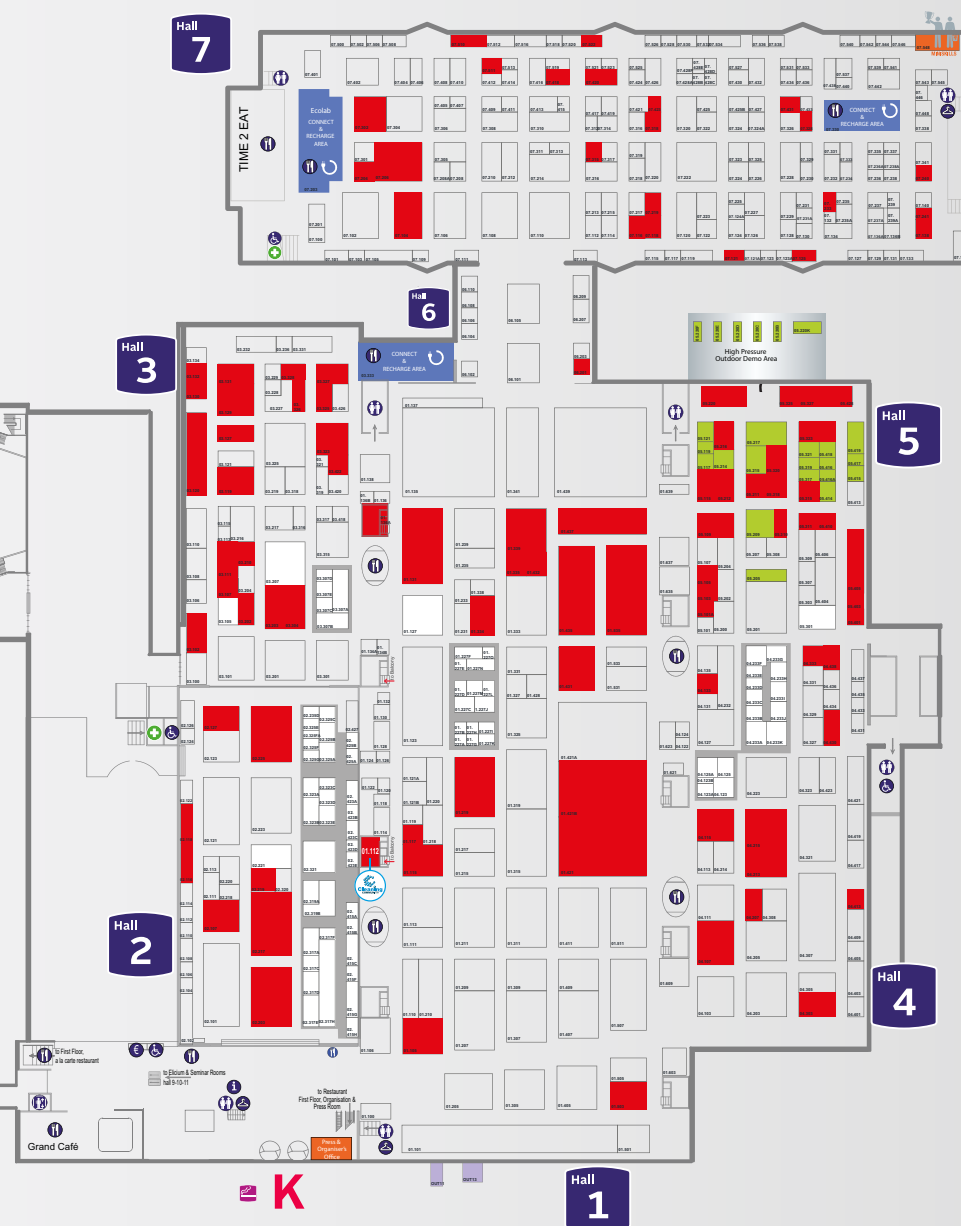
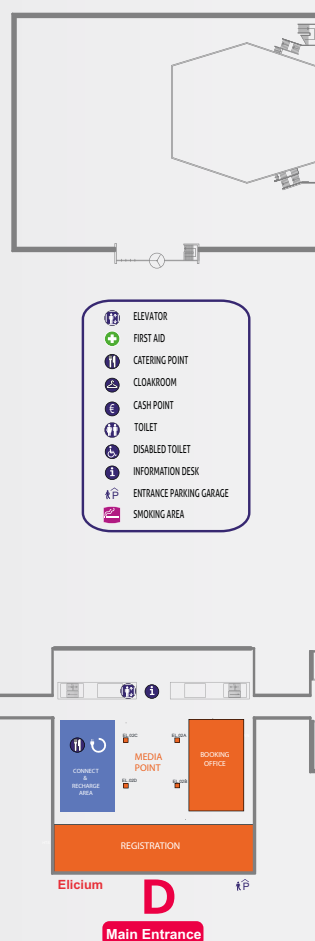
# Floor Plan



## Legend



Connect & Recharge area  
Events & Demonstration



# General Information

## Organisation

RAI Amsterdam - ISSA/INTERCLEAN Amsterdam  
P.O. Box 77777  
1070 MS Amsterdam

## Contact information

Europaplein  
1078 GZ Amsterdam  
The Netherlands  
+31 (0)20 549 12 12  
info@issainterclean.com  
www.issainterclean.com

## Visitor registration / Admission charge

### Registration policy:

- Visitor registration is free of charge for all trade visitors up to and including 2 May
- As of 2 May an online registration fee of € 40.00 per person is applicable
- During the show period (10-13 May) the fee for online and onsite registration is € 70.00 per person
- Invitations extended by exhibitors enable free registration at all times

[www.issainterclean.com](http://www.issainterclean.com)

## Parking

RAI Amsterdam has lots of parking facilities in and around the building. Visitors to public events are advised to use public transport.

## Visitor Support Service

Registration Area	Main Entrance EL O4
Sales Office	Main Entrance EL O1
Issa/Interclean CMService	Main Entrance EL O5
Issa/Interclean Connect & Recharge	11.727
Issa/Interclean Connect & Recharge	07.330
Issa/Interclean Ecolab Connect & Recharge	07.203
Issa/Interclean Library	03.333
Amsterdam Innovation Award	09.216
Innovation Lab	09.216
Mini Skills	07.548
High Pressure Demo Area	05.220M - 05.220N
Box Information	Out 13
Outdoor Demo Show Windows Cleaning Demonstration	Out 13
Outside Demo Show	Out 5
Smoking Area	Out 10
Fist Aid - Fire service -Security	Call +31 (0) 20 54912344 or internal telephones 1234
Lost and found	At the reception desk in the entrance D. Elicium.
Theft	To the reception D. Elicium or call +31 (0) 20 549 22330

## Trade show hours

Tuesday, 10 May	10:00 to 17:00
Wednesday, 11 May	10:00 to 17:00
Thursday, 12 May	10:00 to 17:00
Friday, 13 May	10:00 to 16:00

## Tickets

Parking in the RAI-garage costs € 17.50 per 24 hours. Free parking for motorbikes.

Exit passes no longer required for parking in the RAI- garage.

The license plate of your car will be read automatically by a camera as you enter the garage. You can pay the parking fee related to that license plate at the payment terminal immediately upon arrival, or before leaving the garage. RAI Amsterdam applies a single parking rate per 24 hours. You will not receive an exit pass. When exiting the garage, your license plate will be read by the camera and the barrier will open automatically.

# General Information

The Amsterdam Fair, as we know, is the biggest exhibition dedicated to the cleaning and hygiene sector.

There are over 800 exhibitors from 130 countries. They will show more than 1000 products and provide an unequalled opportunity for networking.

For more information and practical tips on visiting Interclean, go to the official fair website [www.issainterclean.com/en/amsterdam/your-trip/](http://www.issainterclean.com/en/amsterdam/your-trip/). We have taken some pointers from it too for our Exhibition Guide.

## How to get there: by plane and train

If you are arriving in Amsterdam by plane (Schiphol Airport), you can reach the Fair by train. The Amsterdam RAI fair zone is ten minutes from the airport and has its own station. The RAI building is only a few minutes on foot from the RAI railway station.

If you pre-register as a visitor you can travel first class free from the airport to the fair.

[www.issainterclean.com/en/amsterdam/your-trip/schiphol-train/](http://www.issainterclean.com/en/amsterdam/your-trip/schiphol-train/)

If you are arriving by train (and have pre-registered as a visitor) you can get a discount on your train ticket.

[www.issainterclean.com/en/amsterdam/your-trip/train/](http://www.issainterclean.com/en/amsterdam/your-trip/train/)

## Car

RAI Amsterdam is situated just off Amsterdam's A10 ring motorway (exit 9) and has its own underground car park.

### From Rotterdam/The Hague

Take the A4 in the direction of Amsterdam. About 10 km after you have passed Schiphol Airport, take the exit 9. Turn right at the traffic lights and follow the signs to the car parks. During major events signposts along the ring road will direct you to one of the car parks on the edge of Amsterdam, where a shuttle bus will bring you to the RAI.

### From Utrecht / Amersfoort

As you approach Amsterdam, follow the signposts for "A10 Den Haag". Leave the A10 at the exit 9. Turn right at the traffic lights and follow the signs to the car parks. During major events signposts (P-RAI) along the ring road will direct you to one of the car parks on the edge of Amsterdam, where a free shuttle bus will bring you to the RAI.

**GPS:** Europaplein, 1078 GZ Amsterdam, the Netherlands

## City's tram, metro and bus network

RAI Amsterdam has an excellent connection to the city's tram, metro and bus network. Tram 4 stops right in front of the RAI and will take you into the heart of Amsterdam.

### From Amsterdam Central Station

Take tram 4 to RAI Amsterdam (Europaplein stop) or metro 51 in the direction of Westwijk (get off at train station RAI)

### From Amsterdam Amstel station

Take metro 51 (get off at train station RAI Amsterdam), or bus 65 direction KNSM eiland (Scheldeplein stop) or Bus 62 direction Lelylaan (Europaplein stop)

### From Amsterdam Sloterdijk station

Take metro 50 direction Gein (get off at train station RAI Amsterdam)

### From Amsterdam Duivendrecht station

Take the train in the direction of Schiphol (get off at train station RAI Amsterdam) or metro 50 direction Isolatorweg (get off at train station RAI Amsterdam stop)

### From Amsterdam Lelylaan station

Take bus 62 direction Amstelstation (get off at Europaplein)

### From Amsterdam Zuid / WTC

Take bus 65 direction KNSM eiland (Scheldeplein stop) or metro 50 direction Gein (get off at train station RAI)

In the tram and in the bus you can buy a 1-hour ticket (a disposable chipcard). The ticket is also available at the GVB Tickets & Info counters and from the ticket vending machines in the metro stations. With this ticket you can travel for one hour on all GVB tram-, bus- and metro lines.

## Amsterdam Passport

Amsterdam Passport is a guide for business visitors to Amsterdam. The printed version is published annually by RAI Amsterdam and is available for free at hotels around the city and during international exhibitions and events. Our website is continually updated with all the latest information and offers. You will find everything you need to know, including restaurants, hotels, nightlife, museums, culture, and more.

[www.amsterdampassport.com](http://www.amsterdampassport.com)



## Seminars Program

**SEMINARS PROGRAM** Gain knowledge and grow your business perspective, obtain key advice or build knowledge from inspirational speakers. The ISSA educational seminar program covers all areas of interest. All seminar sessions are free to attend thanks to sponsors.

### TUESDAY 10 MAY

#### *The Supply Chain Shake-Up: How will you survive and thrive?*

Panel Discussion: Luc Bresseleers, CEO, Boma N.V.; Paul Kelly, Commercial Director, Rubbermaid Commercial Products; Andrew Dunning, UK Distribution Manager, Numatic; Alan Tomblin, Sales Manager North America P&G Professional

**LOCATION: D407 (RAI Elicium) - 9:00 - 10:00 hours**

#### *Giulio Guizzi- Cleaning & Sanitation: A global History*

Giulio Guizzi will present an introduction to his book on the History of Cleaning & Sanitation worldwide. This absolutely new book (28 feb.2016) recounts the history of cleaning from ancient civilizations until to day and to the green sustainable tomorrow, including the history of all innovations and inventors.

**LOCATION: InnovationLAB (stand 09.216) - 11:00 - 11:45 hours**

#### *The official opening and award ceremony*

A warm welcome from the ISSA/INTERCLEAN directors and the presentation of the Amsterdam Innovation Award 2016 winners.

**LOCATION: Amtrium Ground Floor - 12:00 - 13:30 hours**

#### *YCP panel discussion*

**LOCATION: InnovationLAB - 16:00 - 17:00 hours**

### WEDNESDAY 11 MAY

#### *Lease vs. Buy: Harnessing Untapped Potential*

Stefano Grosso  
When cash flow is unpredictable, customers constantly want the newest technology and you need to keep up with the competition, could leasing cleaning equipment provide a solution?

**LOCATION: D201-202 (RAI Elicium) - 9:00 - 10:00 hours**

#### *The Innovation Show*

A spectacular innovation show. Vincent Everts will give an inspiring presentation on the impact of new technologies on existing markets. What are the future business models and what development will make the largest impact. Highlighting the best innovations at the show; he will talk about Robots and Apps, the Innovation Award nominees and many other interesting products...

**LOCATION: InnovationLAB - 11:00 - 12:00 hours**

#### *Changing the Conversation from Cost to Profit*

Speaker: Brant Inero, Operations Manager, Cleaning Management Institute  
Increased price pressure, ever higher demands to "do more with less," and the continued commoditisation of commercial cleaning places commercial cleaning providers, distributors and suppliers in a difficult dilemma.

**LOCATION: InnovationLAB (stand 09.216) - 12:00 - 12:30 hours**

#### *Update: Cleaning Opportunities in the Circular Economy*

Speaker: Laura Portugal, Technical and Regulatory Affairs Manager, International Association for Soaps, Detergents and Maintenance Products

**LOCATION: InnovationLAB (stand 09.216) - 12:30 - 13:00 hours**

#### *The Internet of Things: How do we leverage so much data?*

Speaker: Ian Campbell, Technology Services Director, Grosvenor Services  
Increased buzz around the "Internet of Things" and "Big Data" taking root in common cleaning technology has managers excited about the prospect of the information they can capture and deliver.

**LOCATION: InnovationLAB (stand 09.216) - 13:00 - 13:30 hours**

#### *Washroom Hygiene: The dispersal of viruses by different hand-drying methods*

Sponsored by the European Tissue Symposium.

Speaker: Keith Redway, Microbiologist, University of Westminster

**LOCATION: InnovationLAB (stand 09.216) - 13:30 - 14:00 hours**

#### *Does Drying Hands Risk Spreading Infection?*

Sponsored by the European Tissue Symposium  
Speaker: Professor Mark

forumpulire.it

# FORUM PULIRE

3<sup>rd</sup> edition

## CLEANING AS AN ABSOLUTE VALUE

### FUTURE OF WORK, E-LEARNING AND TRAINING INDUSTRY 4.0, NEW SUPPLY PROCESSES

## INTERNATIONAL CONGRESS

## 14-15 september 2016

## UniCredit Pavilion - Milan

Promoted by:  
**afidamp**  
**ONBSI**

Organizer:

**afidamp**  
SERVIZI

further  
informations:  
+39 02 6744581

Location:



Media Partner:

**GSA**

**ECJ Cleaning**

Partner:

ANIP FISE | CNA  
CONFCOOPERATIVE  
CONFARTIGIANATO  
FENI | FIDEM | FNIP | ISSA  
LEGACOOP SERVIZI | SNS

SILVER SPONSOR



BRONZE SPONSOR





## Seminars Program

Wilcox, University of Leeds and Leeds Teaching Hospitals.

**LOCATION: InnovationLAB (stand 09.216) - 14:00 - 15:00 hours**

### *The Innovation Show*

*Sponsored by SVS, NVZ, OSB and VSR*

A spectacular innovation show. Vincent Everts will give an inspiring presentation on the impact of new technologies on existing markets. What are the future business models and what development will make the largest impact.

**LOCATION: InnovationLAB - 15:00 - 16:00 hours**

### *YCP Innovation Award Inspire Me sessie*

**LOCATION: INNOVATIONLAB® 16:00**

## THURSDAY 12 MAY

### *The Innovation Show*

*Sponsored by SVS, NVZ, OSB and VSR*

A spectacular innovation show. Vincent Everts will give an inspiring presentation on the impact of new technologies on existing markets.

**LOCATION: InnovationLAB 11:00 - 12:00 hours**

### *Selling Clean: Connecting Safety and Risk Management*

*Speaker: Dianna Steinbach, EMEA Director of Member Services, ISSA*

European Union studies estimate that for every euro businesses invest in occupational safety and health, there is a return of 2.2 euros.

**LOCATION: InnovationLAB 12:00 - 12:30 hours**

### *EU Activities Impacting the Cleaning Industry*

*Speaker: Adreas Lill, European Federation of Cleaning Industries*

Hear an industry update from the premier lobbying body for the contract cleaning market as Andreas Lill, Director of the European Federation of Cleaning Industries (EFCI) describes the challenges facing cleaning organisations in today's political and economic climate. The European Commission continues to propose and evaluate a variety of initiatives that impact companies in the cleaning industry. From the development of public procurement directives and wages rates to other social programmes, find out what actions are being taken to advocate for the industry and what you need to know to remain current and in compliance as an employer in this market.

**LOCATION: InnovationLAB (stand 09.216) 12:30 - 13:00 hours**

### *Robotic Developments to Meet Facility Needs*

*Speakers: Gabriele Cesari, Innovation Manager, Manutencoop Facility Management SpA; Nicola Flores, Marketing Specialist, FIMAP SpA*

Learn more about the lessons learned from the current, EU-funded consortium that is seeking to develop the next generation of cleaning innovation through a collaborative effort of facility decision makers, cleaning organisations, and manufacturers. The Flobot initiative, coordinated by the

Cyrus Research and Innovation Center and supported by the EU Horizon 2020 initiative, is working to develop robotic cleaning equipment to meet the growing demands of cleaning organisations and facilities, combining today's latest technology with elements not yet employed in the industry.

**LOCATION: InnovationLAB (stand 09.216) 13:00 - 13:30 hours**

### *The Internet of Things: How do we leverage so much data?*

*Speaker: Ian Campbell, Technology Services Director, Grosvenor Services*

Increased buzz around the "Internet of Things" and "Big Data" taking root in common cleaning technology has managers excited about the prospect of the information they can capture and deliver. However, it is estimated that the digital universe will double in size every two years due to this increased information. By 2020, data is expected to reach 44 zettabytes, or 44 trillion gigabytes. The potential productivity revolution that could result will only happen if you hone in on the high-value, target-rich data with the largest footprint to impact your organisation. Learn more about how to harness available information for maximum impact in the commercial cleaning and facility services industries.

**LOCATION: InnovationLAB (stand 09.216) - 13:30 - 14:00 hours**

### *Redefining innovation - Opportunities of the EU Circular Economy package for the professional clean*

*Keynote speaker:*

Dr. Hugo-Maria Schally, Head of Unit Eco-Innovation and Circular Economy, Directorate General for the Environment, Directorate Green Economy of the European Commission.

*Panellists:*

- Markus Asch, Deputy CEO Alfred Kärcher GmbH & Co. KG. (machines)
- Michele Redi, MD IPC-Tools (cleaning toos)
- Joost Brinkhuis, Manager Development & Education at Asito (cleaning contractor and facility service provider)
- Anette Timmer-Larsen, Sustainability Director (EMEA) for the Tarkett Group
- Frank Vancraeyveld, CEO tana-Chemie GmbH and Head of Professional Division Werner&Mertz Professional (chemicals)
- Reinhard Schneider, CEO and owner Werner&Mertz GmbH (taking the initiative as eco-entrepreneur)

**LOCATION: D203 (RAI Elicium) - 14:00 - 15:15 hours**

### *Golden Service Award*

themamiddag Innovatie (Dutch spoken)

Vanuit de samenwerkingen tussen opdrachtgever en schoonmaakbedrijf of leverancier en schoonmaakbedrijf ontstaan vaak de mooiste vernieuwingen.

**LOCATION: D201 (RAI Elicium) - 14:30 - 18:45 hours**

## Seminars Program

### *The Innovation Show*

*Sponsored by SVS, NVZ, OSB and VSR*

A spectacular innovation show. Vincent Everts will give an inspiring presentation on the impact of new technologies on existing markets. What are the future business models and what development will make the largest impact. Highlighting the best innovations at the show; he will talk about Robots and Apps, the Innovation Award nominees and many other interesting products...

**LOCATION: InnovationLAB - 15:00 - 16:00 hours**

### *ISSA Hygeia Network Leadership Roundtable*

*Speaker: TBD*

Join female and male leaders from across the industry for this inspiring roundtable session led by a prominent keynote speaker and brought to you by ISSA's Hygeia Network for women in the cleaning industry. Learn what it takes for women to succeed as leaders in a male dominated environment, tips for success that anyone can apply to their own careers, and network with executive peers from across the cleaning profession about today's current leadership issues and trends.

**LOCATION: D201-202 (RAI Elicium) 15:15 - 16:15 hours**

## FRIDAY 13 MAY

### *Afval management* (dutch seminar)

Afvalmanagement is onmisbaar binnen duurzaam ondernemen. Het seminar gaat in op afval in de circulaire economie. Bij RAI Amsterdam wordt afval voor 100% gerecycled. Tegelijkertijd is de totale

afvalproductie de afgelopen jaren met 30% afgenomen. Een praktijkvoorbeeld van hoe een ingrijpende verduurzaming van het schoonmaakproces en afvalverwijdering en vernieuwende initiatieven de weg openen naar een wereld zonder afval mede door de intensieve samenwerking van CSU en Icovia.

**10:00 - 13:00 hours**

## EVENT

### *Robot Arena*

Robotics and other Smart technologies are rapidly entering our sector. The Robot-Arena, part of the InnovationLab, is located in hall 9 and can be considered as the focal point for all innovations. Thriving to inspire the audience from the perspective of the advantages for you as end-user, the Robot-Arena, will feature all current available technologies and trends available. You can follow the demonstrations, you can update yourself on the advantages of these new developments for your day-to-day work, and speak to the companies who deliver the these solutions.

Ever asked yourself: What can this new technology do for me in relation to efficiency, quality, cost and customer satisfaction. And what do I need to know before I start? Visit the InnovationLab and your questions will be answered.

**LOCATION: InnovationLAB (stand 09.216)**

## Italian Exhibitors List\*

A		F	
4CleanPro	07.219	Faber Chimica	05.103
4Puntozero	01.112	Falpi	04.107
Adiatek	03.127, 03.129	Fa-Ma Jersey	07.240
Afidamp - Pulire	06.201	Faraone Industrie	03.422 - Out 03
Alberti International	05.413	FCM	07.522
Amer	03.111	Fibratesco	04.421
Ametek	02.107	Filmop	01.219
Annovi Reverberi	05.109	Fimap	01.421
Aqua	07.420	Fimm Italia	07.233
Ariston Cleaning Solutions	04.430		
Arrighi Mario & C.	07.233		
B		G	
Bertolini Idromeccanica	05.315	Ghibli	01.131, 01.136A, B24
Biemmedue	02.127	Gisowatt by Cleaval	05.105
Bram	04.133		
C		H	
C.C.A.G. Crotti	04.213	Hawk Leuco	05.323
Carind	11.421	HiQ Mechanical Motion	07.318
Carma Professional	11.213	Hygan GmbH	04.207
Cartindustria Eurocarta	11.117		
Casalino Carta	11.119		
Celtex	10.211		
Centralcarta	10.306		
Cimel Turbolava	03.326		
Cleaning Component	05.401		
Comac	01.421		
Comet	01.503		
Corazzi Fibre	05.403		
Coyngo	03.131		
D		I	
Dagu	07.315	Ibix	05.410
Daina	11.136	Idrobase Group	03.119
DEC	01.334	IdroElektrika	07.116
Delfin	04.303	Idromatic	05.318
De Nora	07.204	Idropavese	03.326
Depureco Industrial Vacuums	03.327	Ing. O. Fiorentini	02.225
Dulevo International	02.217	Injecta	04.333
Duplex International	03.207	Interchem	07.138
E		Interpump Group	01.105
È Così	07.104	IPC	01.435, 01.437, 01.535
Eco Sistema	11.823	Isal Kärcher Group	01.135
Ecochem	03.203	Italchimica	07.206
Elsea	01.115		
Epoca	03.132		
		K	
		Kemak Group	02.219
		Kevac	07.302
		Klindex	04.115
		KlinMak	03.328
		Kroll	10.121
		L	
		Lavorwash	07.423
		Lievore	07.423
		Lindhaus	03.304
		Lucart Group	11.401

# Archetype

WHERE EVERYTHING BEGINS

Archetype sprayers are Epoca's top sprayers for industrial cleaning, automotive and building field. Archetype line includes sprayers in different capacities (1.5, 5 and 10 liters) and with different seals (Viton and EPDM). The 1.5 liters sprayer is fitted with our brand-new Kappa restyled head. One of its main upsides is that a **transparent view stripe line** allows the user to easily monitor the level of the content of the tank. The 5 and 10 liters sprayers are available in a basic version and in a PRO version. The PRO version is the first sprayer to have four couplings right on the head of the pump. Two of these couplings can be used for the lance tube and for the safety valve, while the others host the **manometer** and a **coupling to connect air pump fitting**. We have decided to place all couplings directly on the head of the sprayer, in order to give the tank a particular shape and to considerably enhance its performance and lifetime. This version is also equipped with a **large stability base** with a compartment to store the nozzles and spare O-rings. It is understood that each of these three capacities sprayers is available in the **Foamer** version too.

**THE NEW ARCHETYPE LINE  
HALL 3 STAND NR. 132**



**EPOCA**  
sprayers since 1968

## Italian Exhibitors List\*

M		S	
Maer Idropulitrici	05.211	S.P.E.	01.117
Ma-Fra	05.320	Sanipill	07.118
Mar Plast.	10.419	Santa Gemma TCO	11.326
Maxima	03.202	Santoemma	11.501
Mazzoni	05.310	Sibilia	04.413
Medial - Metalnova	10.215	Simmm Engineering	05.428
Menikini-General Vapeur	11.607	Steam Italia	11.801
Movimotor	03.130	SteamTech	11.709
MTM Hydro	05.115	STI	11.703
N		Sutter Professional	04.215
Nettuno	11.413	Synclean	02.118
Nicolini & C.	01.335	T	
Nordelettronica	05.101A	T.S.M. - Technological Systems by Moro	03.102
Novaltec Group	11.802	Tecnica International	01.432
Nuova Brescia Accumulatori	03.210	Tecno.mec	05.31
O		Tekno M.P	07.431
OMM Scrubbers & Sweepers	02.116	Tenax Sweepers	04.413 - Out 7
Orange Eme	05.212	Tieffe Chemical Solving	07.418
Orma Air Control	11.409	Tiger-Vac Europa	07.328
P		TMB	01.421B
PA	05.220	TPA Impex	11.700
Packing 90	11.140	Tre Colli	03.323
Pape.rdi	11.521	Tron	07.510
Papergroup	11.517	TTS Cleaning	01.431
Papernet - Sofidel Group	10.303	U	
PK San -Co.Ind S.C.	07.121	Udor	05.325
Poli Cleaning Machines	05.405	Univac	07.511
Power Wash Italiana	04.438	V	
Pulire - Afidamp	06.201	Vama Elettrotermo Meccanica	10.109
Pulitecno	05.216	VDM	01.339
Q		Vega	07.125
QTS Italy	10.311	W	
R		Wimex	07.241
Ramex	05.327	Wm System	03.325
RCM	01.133		
RGS Vacuum Systems	03.107		
Roiat	11.722		

\* updated April 18th

## Italian Exhibitors - Hall

HALL 01		T.S.M. - Technological Systems by Moro	
4Puntozero	01.112	Tecnovap	03.120
Comac.	01.421	Tre Colli	03.323
Comet	01.503	WM System	03.325
DEC	01.334	HALL 04	
Elsea	01.115	Ariston Cleaning Solutions	04.430
Filmop .	01.219	Bram	04.133
Fimap	01.421	C.C.A.G. Crotti	04.213
Ghibli	01.131, 01.136A, B24	Delfin	04.303
Interpump Group	01.105	Falpi	04.107
IPC	01.435, 01.437, 01.535	Fibratesco.	04.421
Nicolini & C.	01.335	Hygan GmbH -	04.207
RCM	01.133	Injecta	04.333
S.P.E.	01.117	Klindex	04.115
Tecnica International	01.432	Power Wash Italiana	04.438
TMB	01.421B	Sibilia	04.413
TTS Cleaning	01.431	Sutter Professional	04.215
VDM	01.339	Tenax Sweepers	04.413 - Out 7
HALL 02		HALL 05	
Ametek	02.107	Alberti International	05.413
Biemmedue	02.127	Annovi Reverberi	05.109
Dulevo International	02.217	Bertolini Idromeccanica	05.315
Ing. O. Fiorentini	02.225	Cleaning Component	05.401
Kemak Group	02.219	Corazzi Fibre	05.403
Lavorwash	02.203	Orange EME	05.212
OMM Scrubbers & Sweepers	02.116	Faber Chimica	05.103
Synclean	02.118	Gisowatt by Cleaval	05.105
HALL 03		Hawk Leuco	05.323
Adiatek	03.127, 03.129	Ibix	05.410
Amer	03.111	Idromatic	05.318
Cimel Turbolava	03.326	Maer Idropulitrici	05.211
Coynco	03.131	Ma-Fra	05.320
Depureco Industrial Vacuums	03.327	Mazzoni	05.310
Duplex International		MTM Hydro	05.115
Ecochem	03.203	Nordelettronica	05.101A
Epoca	03.132	PA	05.220
Faraone Industrie	03.422	Poli Cleaning Machines	05.405
Idrobase Group	03.119	Pulitecno	05.216
Idropavese	03.326	Ramex	05.327
KlinMak	03.328	Simmm Engineering	05.428
Lindhaus	03.304	Tecno.mec	05.311
Maxima	03.202	Tecomec	05.311
Movimotor	03.130	Udor	05.325
Nuova Brescia Accumulatori	03.210	HALL 06	
RGS Vacuum Systems	03.107	Pulire - Afidamp	06.201



## Italian Exhibitors - Floor Plan

HALL 07			
4CleanPro	07.219	Mar Plast	10.419
Aqua	07.420	Medial - Metalnova	10.215
Arrighi Mario & C.	07.233	Papernet - Sofidel Group	10.303
Dagu	07.315	QTS Italy	10.311
De Nora	07.204	Vama Elettrotermo Meccanica	10.109
È Così S.r.l.	07.104		
Fa-Ma Jersey	07.240	HALL 11	
FCM	07.522	Carind	11.421
FIMM Italia	07.233	Carma Professional	11.213
HiQ Mechanical Motion	07.318	Cartindustria Eurocarta	11.117
IdroElektrika	07.116	Casalino Carta	11.119
Interchem	07.138	Daina	11.136
Italchimica	07.206	Eco Sistema	11.823
Kevac	07.302	Lucart Group	11.401
Lievore	07.423	Nettuno	11.413
PK San Co.Ind S.C.	07.121	Menikini-General Vapeur	11.607
Sanipill	07.118	Novaltec Group	11.802
Tekno M.P	07.431	Orma Air Control	11.409
Tieffe Chemical Solving	07.418	Packing 90	11.140
Tiger-Vac Europa	07.328	Paper Divipac	11.521
Tron	07.510	Papergroup	11.517
Univac	07.511	Roial	11.722
Vega	07.125	Santa Gemma TCO	11.326
Wimex	07.241	Santoemma.	11.501
HALL 10		Steam Italia	11.801
Celtex	10.211	SteamTech	11.709
Centralcarta	10.306	STI	11.703
Kroll	10.121	TPA Impex	11.700

## Companies & Products

### HALL 01

#### COMAC - 01.421



#### The scrubbing machine

Antea is a walk behind scrubbing machine, battery powered, offering high performances for both maintenance and heavy duty cleaning. It is available with a disc brush with 50 cm working width, with traction (BT version) or without it (B version). Moreover, they come with traction also the scrubbing-sweeping version with 2 cylindrical brushes (BTS) and the new orbital version (BTO). Antea stands out for its new design that provides reliability and sturdiness.

#### FIMAP - 01.421



#### The on demand cleaning experience

Genie XS is the revolutionary scrubbing machine suitable for cleaning very easily small and cluttered environments. It is powered with a lithium ion battery that allows to perform many, short and targeted cleaning operations during the same day. Genie XS is small and lightweight so you can take it wherever you need it. The floor is dry and safe with only one pass, preventing the risk of dangerous slips.

## Companies & Products

### IPC - 01.435 -01.437 -01.535



#### The innovative solutions

CT80 APC is a compact, silent and comfortable scrubber drier that provides a precise and constant water flow from start to finish by the innovative 'Advanced Productivity control' system. In addition, the new 'Memory card' feature allows full control on how the machine has been used and how to prevent service problems.

Other products that will be presented at ISSA InterClean: PW H-50, the new generation in IPC hot water high pressure cleaners range; a new complete line of A-class vacuum cleaners, the professional ECO line, more and more efficient and energy saving; Brix, the multifunction, innovative trolley unveiled has evolved into the new Eco line Black is Green. The recycled plastics 2.0 are an exclusive IPC technology that ensures a quality and durability comparable to non recyclable plastics, while producing >75% less waste; Cleano, the professional system for cleaning indoor glass surfaces, has widened its range with Cleano 10 and 30. Ideal to clean horizontal and vertical surfaces, Cleanos make cleaning operations easier and faster than the 'sponge'.

### ISAL Kärcher Group - 01.135



#### A new ride-on sweeper

Isal is pleased to present new ride-on sweeper 160. A new sweeper of medium dimensions with sweeping path of 160 cm with central and side brushes, ideal to be used in indoors and outdoors heavy industrial environments. With its compact dimensions 160 moves nimbly in warehouses and logistics facilities. There are 3 versions available: 160DK with KUBOTA Diesel engine that ensures reliability; 160GPL with gas KUBOTA engine to maintain a low pollution; 160E with battery to eliminate pollution from exhaust gases and decrease noises. 160E is presented with a new technical solution, which consists of an electric motor in A/C current for traction forward and reverse at work: 30% working time more than our previous model, lower noise and better comfort for the operator.

160 is equipped with filtering system in fabric to control the very fine dust.

## Companies & Products

### RCM - 01.333



#### Cleaning Machines

RCM presents: BYTE I: a brand new 30lt walk behind scrubber that reduce the impact on the environment and cleaning costs; BYTE II: a brand new 45lt walk behind scrubber with improved cleaning performance and ergonomics; KILO: a new version of the of the compact rider scrubber with increased cleaning width at 61 cm; MEGA: the line of mid-size walk behind scrubbers with the new Eunited certification of reduced environmental impact; TERA 3WD: a new version of the 300lt rider scrubber with 3 wheels drive designed to have the best performance and safety in the cleaning of parking and slippery surfaces; TERA COMBI: with the newly designed accessory, the largest rider scrubber drier become a combined sweeper-scrubber able to sweep dirt, vacuum dust, scrub and dry in a single pass.

### TECNICA INTERNATIONAL - 01.432



#### Upright Vacuum cleaner

HD-GRAVitech an upright vacuum cleaner that offers professional performances and with the new device applied the weight on the handle can be reduced up to 50%. The low profile and the ability to continue to operate when the handle is completely flat to the floor allows the HD-GRAVitech to clean under furniture. Superior edge cleaning allows for deep carpet cleaning along the baseboard. The on-board wand and stretch hose provide for quick and easy cleaning of both high-up and difficult to reach areas. The power head have a multi-level manual adjustment (4 positions) to give superior results on all levels of flooring.

The brush drive motor is electronically protected against over loading and the easy to read LED light system assures the that the setting is correct.



# Companies & Products

## TMB - 01.421B



### Orbital single disc machine

TOR 43 is a new concept single disc machine recommended for heavy duty works. It has an orbital movement that enhances the performances of a regular single disc machine. The high frequency oscillations get stability and manoeuvrability and makes its use very easy for any operator, that has not necessary to be endowed with distinctive physical strength, reducing also training time.

## TTS - 01.431



### Trolleys

Magic Line has been enriched by the last-born in TTS, Mini Magic trolleys, which have been developed in order to concentrate in a small area all the features and advantages of Magic Line. Choose the best configuration for your needs: storage area, waste collection or washing area and you'll have all you need in 50x52cm, with a trolley which is easy to move and carry around. At last you can enter small areas as offices, elevators, storage closets. Moreover, thanks to the new TTS plastic hooks, you can create Magic+: a fully accessorised trolley connected to a smaller mobile workplace; when you need it, with a click you disconnect a part from the main trolley and avoid going back to the trolley, just bringing with you only what you need. This attachment/detachment system, which can be applied to the whole Magic Line, does not fear uneven floors: its particular structure allows you to overcome small steps or obstacles.



-be different-



- New Chic Total Black line -



[www.packing90.it](http://www.packing90.it) [info@packing90.com](mailto:info@packing90.com)



Made in Italy

## HALL 02

### DULEVO INTERNATIONAL - 02.217



#### Cleaning Equipment

Dulevo International was founded in 1976 in Parma to manufacture Cleaning Equipment as Single-disc machines, Vacuums, Wet-cleaning machines, Sweeper and Municipal Equipment. Dulevo is the largest manufacturer in Italy in the industrial and the urban cleaning sector with established subsidiaries and a full developed worldwide dealers' network. Dulevo 3000 Revolution the perfect working tool for all seasons - everywhere and at any time - regardless of high or low temperatures, sun, rain or snow. Up to date technology and top-quality components ensure the high quality demands of the market - a guaranty of longevity.

### ING. O. FIORENTINI - 02.123 - 02.125



#### Cleaning Machines

Ing. O. Fiorentini SpA is working in the cleaning market for almost forty years as a manufacturer of high quality cleaning machines, exporting all over the World with continuing and growing success. Nowadays the company manufactures a complete range of: scrubber-driers (pedestrian and ride-on); sweepers (pedestrian and ride-on); vacuum cleaners; single disc machines; floor maintainers; carpet cleaners and other professional equipment related to the cleaning business.

The machines are entirely Made In Italy both for the design and the production. They are completely mechanical therefore easy to use and to maintain.

### KEMAK - 02.219



#### Vacuum Cleaners

Kemak Group is an important Italian industrial reality seat in Verona. Manufacture professional and industrial vacuum cleaners, also customized to meet the most diverse demands in terms of performance and space, Kemak is a player in the cleaning business in Europe today, thanks to a complete range of cleaning equipment characterized by sturdiness, efficiency and simplicity of use. Kemak preserves all the core values of the Italian industry plus the excellent quality of Italian workmanship. With a structure of 2 thousand square meters, 2 primary production lines, an external moulding department and a warehouse, Kemak has a production capacity of 50 thousand units a year. With its own experience, Kemak offered an excellent quality/price ratio along with innovative technical and design features.

### LAVORWASH - 02.203



#### Ride-on- scrubber

SCL Comfort XXS is the smallest ride-on scrubber-dryer of Lavor Pro range: its undisputed plus are ease of use, compact size, washing effectiveness and perfect drying. It is equipped with automatic detergent measuring system with separated tank always granting the correct mix of chemicals resulting in a perfect washing outcome and using only the necessary quantity of detergent needed. This avoids waste of detergent making SCL Comfort XXS is environmental friendly and has been designed for the maintenance.



### HALL 03

#### AMER - 03.111



##### Motorwheel MTR11 250

The most advanced evolution for single wheel traction. Designed for heavy duty conditions, it is particularly indicated for traction on man on board machines.

Service friendly, extremely robust and noiseless. High performance, reduced maintenance.

Features: DC/AC Motor Wheels; Permanent magnet / shunt wound sepex/AC motor; Motor size: MP80 - MP100 - CA100; Gearbox: parallel axis; Power: from 300W up to 2000 W; Voltage: 12V to 96V DC / AC; Reduction ratio variable. Upon request: Electromagnetic brake; Encoder; Custom Wheel material; Electronic driver.

#### DEPURECO - 03.327



##### Industrial Vacuums Cleaner

TB Z21 has been certified ATEX21 after it passed the strict quality test made by the DNV-Italia certifying authority. This Certification comply the Machinery Directive 99/92/CE and the ATEX Directive 94/9/CE, string CE Ex II 2D.

Depureco TB Z21 is engineered and built according to the ATEX Directive and it comes with: 304 stainless steel filter chamber and dirty can, thermal switch in Explosion Proof box certified 2D IP66, air speed reducer with Silencers, safety filter on air exit, Vacuumeter to get always the control of the vacuum performances, main filter in polyester 'M' Class teflon coated, and safety relief valve on Siemens side channel blower. On request TB Z21 can be equipped with HEPA 14 filter (99,995%) for fine/toxic dusts.



**LE SPAZZATRICI SWEEPERS:**  
**POTENTI ROBUSTE AFFIDABILI POWERFUL RUGGED RELIABLE**



[www.isalsweepers.com](http://www.isalsweepers.com)

## Companies & Products

### DUPLEX INTERNATIONAL - 03.207



#### Floor and carpet cleaners and escalator cleaners

Duplex International was established in 1953 as a high precision mechanical and electronic instrument manufacturing company, Duplex has been manufacturing the Duplex Floor and Carpet Washer and Escalator Cleaners for over 20 years. These ultra-modern machine, available in different versions are studied to obtain the maximum result in small, medium and large sized areas such as Hotels, Restaurants, Shops, pubs, Offices, Gyms, Hospitals, Shopping centres, Underground station, Airports, ect.

### EPOCA - 03.132



#### Top sprayers

Archetype sprayers are Epoca's top sprayers for industrial cleaning, automotive and building field. Archetype line includes sprayers in different capacities (1.5, 5 and 10 liters) and with different seals (Viton and EPDM). The 1.5 liters sprayer have a transparent view stripe line allows the user to easily monitor the level of the content of the tank. The 5 and 10 liters sprayers are available in a basic version and in a PRO version. The PRO version is the first sprayer to have four couplings right on the head of the pump, which includes a manometer and a coupling to connect air pump fitting. This version is also equipped with a large stability base with a compartment to store the nozzles and spare O-rings. These sprayers are available in the Foamer version too.

## Companies & Products

### IDROBASE GROUP - 03.119



#### Equipment/tools for cleaning, care and safety

Idrobase Group, 4 brands for a company that manufactures plants and accessories for the pressure water market. Professional washers, accessories and spare parts for any type of pressure washer on the market, fogging systems for a company with the ability to renew itself constantly.

Puliturbo 3 is a professional vacuum cleaner and wet vacuum equipped with 3 engines. It's a practical solution, handy and easy to use and suitable for continuous work. It can be used for thorough cleaning of busses, in repair garages, and in combination with machines that carry out machining operations on metal and plastic.

### IDROPAVESE - 03.326



#### Pressure Washer

The 'Special Inox' is the top of the range, born after 20 years of experience in pressure washer sector.

It's all made in 304 stainless steel.

The 'Special' is made all with the Italian quality:  
Electric Motor From 5,5 Hp To 17 Hp,  
Built-In Fuel Tank,  
Horizontal Boiler,  
304 Stainless Steel Coil.

The range includes model from 160 bar to 500 bar.



## Companies & Products

### KLINMAK - 03.328



#### An innovative scrubber-dryer

HILO8065 has maintained the mobility and easiness of a walk-behind, with the productivity of a ride-on.

The combination of advantages generates a unique machine that allows it to adapt to all types of applications, halving the operating cost. 80 l tanks, 2x13", heavy duty brush head (41 kg) for deep and daily cleaning.

The strategical positioning of the squeegee vac just behind the brushes leave just-scrubber floor clean and dry avoiding the risk of slip-and-fall injuries. Auto speed reduction on turnround to grant the max safety standard for any environments.

Brushes/pads down pressure. Infinitely adjustable from 0 up to 41 Kg performing a light, medium, heavy or stripping cleaning process subject to appropriate brushes selection. Led display on dash board for brushes pressure control.

The patented (pending) system by two thooated brushes allows for the installation of a single scrubbing motor (0,55 kW).

### MOVIMOTOR - 03.130



#### Motors, Gears motors

Movimotor designs, develops and produces D.C motors, D.C. gear motors and D.C. transaxle drive systems according to customers' specifications.

Production flexibility and technological innovation are very important for Movimotor which has always invested in high-tech machinery and moulds which enable the production of complete projects suitable for any customized solution. Most of the production is performed inside the company. This ensures the regular checking of all the operations and also high standards of quality thus avoiding any possible problem during the manufacturing process. The company is certified according to the UNI EN ISO 9001:2008 Quality Certification.

In the photo you can see an example of production of a d.c. permanent magnets parallel axis gear-motor mainly used in the field of the industrial cleaning (floor-cleaning, scrubbers, sweepers machines).



ORMA



# AIR CONTROL<sup>®</sup>

## Metered Aerosol Insecticide With Automatic Dispenser



#### CHARACTERISTICS:

- High concentration of Natural Pyrethrum (1,75% pure)
- Natural Pyrethrum is considered as a safe molecule
- One Machine covers an area of 120 cbm
- Both repellent and knock down effect
- One aerosol can lasts from one to three months
- Effective against both flies and mosquitoes



ORMA srl - Via U. Saba, 4 - 10028 Trofarello (To) Italy  
TEL. +39 011.64.99.064 - FAX +39 011.68.04.102  
www.ormatorino.com - e-mail: aircontrol@ormatorino.it

### NUOVA BRESCIA ACCUMULATORI - 03.210



#### Manufacturer of lead/acid and gel batteries

NBA can provide solutions for many different application thanks to its wide range of lead-acid starter batteries, stationary batteries and batteries for light or industrial traction that are completely manufactured in house. NBA products are especially characterized by ease of handling, lightweight, easy maintenance, high capacity and long life. For the manufacturing phase, which takes advantage a high power charge of advanced assembly techniques, very high-quality materials are employed which ensure maximum components' strength and longer battery life. NBA has managed to be awarded the prestigious certifications UNI EN ISO 9001:2000, regarding company management systems, and UNI EN ISO 14001, regarding environmental management system.

### TSM - 03.102



#### Scrubber driers

Grande Brio Ride On 75 is a unique ride on scrubber drier, with a total length of only 1200 mm, able to make a 'U-turn' in its position. It is distinguished by compactness, maneuverability and versatility. The Grande Brio Ride On 75 is completely mechanical and is composed of a tough steel chassis on which are mounted a 75 l solution tank and the recovery tank of 80 l. The innovative squeegee mounted behind the brushes, that perfectly follows the movements of the machine without leaving splashing on the floor, not only allows to be extremely compact but to access and work in very narrow areas in which the most common scrubbers are not able to operate. Grande Brio Ride On 75 is available in 4 versions: Version 550, with two disc brushes with a cleaning path of 550mm; Version 650, with four disc brushes with a cleaning path of 650mm; Version 800, with four disc brushes with a cleaning path of 800mm; Version C-62, with two roller brushes with a cleaning path of 620mm and the ability to mount up to two front brushes for conveying dirt.

### TRE COLLI - 03.323



#### Brushes

Tre Colli produces brushes for industrial sweepers, floor washing machines, road sweepers. We can produce also technical brushes on customer's needs, such as brushes for food industry, stone industry, agriculture and more.

### WM SYSTEM - 03.325



#### Ramps

WM System family grows up. Thanks to the competence acquired in over 20 years WM System is continuing its goal: it creates products that solve everyone's needs. WM System is now divided in three categories of products:

- Loading Ramps: a complete range of manual loading ramps, making commercial vehicle as practical as possible. This means that you can work easily and efficiently and saving time.
- Access Ramps: a product range specialising in ramps for overcoming architectural barriers.
- Dynamic: WM Dynamic is a movable and multifunctional work station to intervene directly "on the field" by operating wherever.

WM System will launch at ISSA interclean the new solution: DYNAMIC.

Dynamic is a mobile unit for professionals that revolutionize the concept of mobile service and now, with a single solution, we can offer many services!

1 Van With Wm Ramp + 1 Dynamic = Many Services.

By interchanging the front module of Dynamic we transform it as we want to our Work Station Autonomous Movable and Multifunctional.



## HALL 04

### ARISTON - 04.430



#### H.A.C.C.P. Professional Cleaning Equipment

'Aricasa Hygiene' is the new range of products of ARICASA Professional line.

The line is dedicated to the Industry, Cleaning Contractors, Ho.Re.Ca sectors and all those environments where the use of a true Professional working tool is needed.

During the development of this project, the focus is on enhancing sturdiness and life of the product, without neglected the ergonomics of the tool design, to make it more functional and practical during the daily use.

Besides, the new Universal Joint, screw plus fixing ferrule of the handle, makes the ARICASA Professional line products more versatile, as it can be easily used with any handle type.

### FALPI - 04.107



#### Solight trolleys

Solight trolleys are the perfect mix between elegance and strength. Their steel and aluminium structure ensures a long life cycle, without giving up a sober, polished and almost invisible aspect, which makes them perfect for luxury facilities.

Variety of configurations, extremely easy handling, easy-to clean construction and customized solutions guarantee a careful housekeeping service both from aesthetic and functional point of view.

### KLINDEX - 04.115



#### Professional floor grinder

Levighetor 640 is the best selling grinding and polishing machine in the world.

It comes with Planetary K1000 for 4"/100mm tools to achieve the best finishing. Ideal to work in apartments. Thanks to the klindex' patented 360° directional wheels that allow to move the machine in any direction, the Levighetor 640 can work in both large and narrow areas like bathrooms and kitchens. With its powerful 4HP motor, the Levighetor 640 is the only mono-phase machine in the world that can work with additional weights.

### SUTTER PROFESSIONAL - 04.215

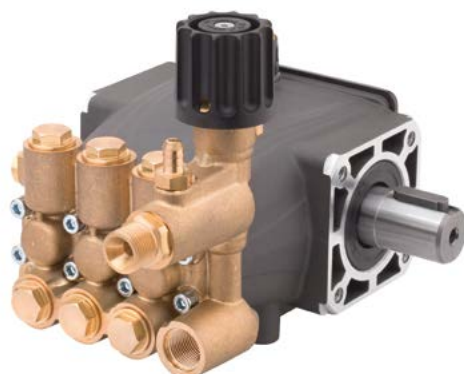


#### Professional cleaning solutions

Sutter Professional is the professional market division of Sutter, a multinational Company, founded in 1858 in Switzerland, that produces and sells products which provide concrete solutions for the cleaning of domestic and professional environments. Sutter Professional offers very effective systems (chemicals, training, consultancy) for any kind of professional cleaning problem for floors, hospitals, contract cleaning, horeca, laundry, industry, etc. Emerald: High performance natural detergent. High performance universal detergent with vegetable based raw materials from renewable sources, for everyday cleaning of all surfaces. Can be used manually or with floor cleaning machine.

## HALL 05

### ANNOVI REVERBERI - 05.109



#### JR - Pump for High Pressure Washers

Small-sized crank-connecting rod mechanism pump for use on fixed or movable misting systems and for electric or gasoline motorpump units for semi-professional high pressure cleaning. It is a new-design pump with flow rate up to 12l/min, designed to operate at low and high speed in order to ensure better lifetime and reliability. The pump is of conventional design, with crankshaft in high-strength steel supported by two good quality and oversized ball bearings. The connecting rods are in a special low-friction alloy. The pump body and side covers are in anodised die-cast high-strength aluminium alloy. The pistons are in hardened stainless steel with a ceramic coating, offering an exceptionally resistance against the wear. The pump features a double gasket sealing system, with a primary seal able to withstand high pressure and a secondary seal able to effectively prevent the water leak. The valves are of rugged construction and sized to ensure high efficiency even with high pressure and speed.

### MAZZONI - 05.310



#### Steam Cleaner

There are several applications for this machine: you can use it for sterilizing with steam (without water) or even with water and steam to clean different types of floors and materials. Also you can use it for removing dirty, using less water for example in precious metal working, in alimentary sector, cleaning in meat industries, industrial kitchens, car wash for cleaning the interior of cars.

In Public areas it can be used for maintenance of gardens, monuments cleaning or to eliminate chewing-gums, graffiti and plastic / stickers spots. The machine has the predisposition to be used from 2 operators at the same time with two different lances: the mechanical lance is littler and handy and the larger one with interchangeable brush and the predisposition for the pre-treatment with detergent for cleaning larger spaces with steam and detergent.



10.11.12.13 MAY 2016 • AMSTERDAM • NL

www.sanitecitalia.com



10.11.12.13 MAGGIO 2016

**STAND 7** POSIZIONE 07.206

10.11.12.13 MAY 2016 | STAND 7 posifion 07.206



### TRILOGY



### QUANTUM



**Italchimica**  
DIVISIONE PROFESSIONAL

Riviera Maestri del Lavoro, 10 - 35127 Padova (PD) - Info@italchimica.it - www.italchimica.it



## Companies & Products

### POLI - 05.405



#### Sweeper Gemma

Sweeper with 80 cm of main brush, produced in two different typologies: the first one with manual unloading of dust container; the second, named 'DSA', with hydraulic discharge of dust container, high 145 cm from the ground (115 liters) and with the possibility to equip it with one pocket filter (5,5 sm) or nr. 8 cartridge filters (6,4 sm). Four types of motorizations: battery, petrol, diesel and petrol/LPG. Strong and ergonomic machine designed to facilitate the work of the operator and ensure long lasting performance with remarkable quality/price relation. Entirely projected and manufactured with components Made in Italy.

### PULITECNO - 05.216



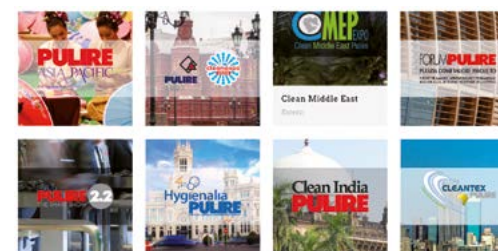
#### Water pressure cleaner

Blitz Hot is an autonomous machine, hot water, very innovative on the market in that it produces hot water autonomously, that is to say that the boiler and 12v 'fed by the battery current which in turn and' recharged by diesel engine. and 'it was designed precisely to be placed on trucks or platforms, in short, where there is' need for high-pressure hot water but there' electric current. diesel engine driven hot water high pressure washer. top efficiency for intensive professional use. used in situations where is required great power together with the degreasing efficiency of hot water, in absence of electricity. the blitz hot is particularly indicated for the removal of graffiti, murals, in the construction industry and in agriculture.

## Companies & Products

### HALL 06

#### PULIRE AFIDAMP - 06.201



**Pulire - The International Show Network**  
Pulire is the international cleaning show network for the cleaning technology equipment and services industry in the world.

**Forum Pulire:** Milan, Sept.14-15 2016  
**Pulire Asia Pacific:** Bangkok, Sept. 21-23 2016  
**Clean Expo Pulire:** Moscow, Nov. 09-11 2016  
**Clean Middle East Pulire:** Dubai, Nov 13-15 2016  
**Pulire 2.2:** Verona, May 23-25 2017

### HALL 07

#### È COSÌ - 07.104



#### Innovative Hygiene Systems

For the Health-Care sector, È COSÌ presents a line of: Aquoxil, for disinfecting tissue; Oxygena, for microbiological safety in food processing environments; Perox, for the disinfection of installations and pipes. Rifax San is a versatile product for the broad spectrum disinfection of surfaces, useful in high-risk areas of contamination; Deornet Clor is mentioned for its quality detergents, disinfectants and deodorants on floors, walls and fixtures.

## Companies & Products

### ITALCHIMICA - 07.206



#### High quality products

The company works with a purpose, create value for customers, employees and shareholders. Mission: create detergents and cosmetics that improve the quality of life according to nature. Vision: to excel in the quality ensuring professionalism and reliability to our customers. Professionalism: reliability, competence and fairness are the basis for all our process achieved in five key areas: people, means, methods, materials, and environment to ensure the satisfaction of customer needs. Responsibility: the company adopts a model dedicated to creating sustainable development for the environment, respect for the rules. The line 'Sanitec' offers a full range of cleaning products, in response to all the different requirements regarding the cleaning. The formulations are designed to come in against the diverse needs of cleaning and sanitation in order to reduce cleaning time and optimize the work of employees. The quality standard is guaranteed by the quality system is implemented for the control of blends and packages.

### UNIVAC - 07.511



#### Vacuum cleaner

UniVac brand and products came out first in 2002. Soon afterwards, its range of products had a varied and quick development and in 2006 the new Company was established in order to meet the market demand in industrial cleaning - in manufacturing as well as in trade sector. Very important aim for UniVac is the cleaning of working environment, especially of foundries and still mills: suction of dust and pieces of waste, return to the atmosphere clean and filtered air, avoiding dust emissions. Sucked material will be stocked in containers or silos apt to discharge. UniVac designs and supplies a varied and high quality range of products of industrial vacuum cleaners, both in diesel and electric versions, mobile and stationary, designed to ensure the best results and built to be long-lasting, granting very low noise and higher than normal filtering capacity.

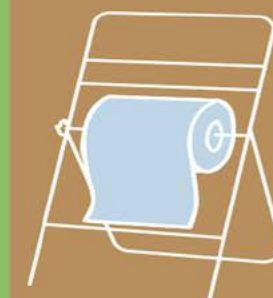


*A family company  
passionate  
about tissue*



Centralcarta s.r.l. Via XXV Aprile, 9-13  
Badia Pozzeveri 55011 Altopascio - Lucca, Italia  
email: info@centralcarta.it - www.centralcarta.it

Industria Cartaria Fenili S.p.A.  
Via Sottomonte 2/4 Coselli (LU)  
email: info@icfenili.com - www.industriacartaria.it



MEDICAL

HO.RE.CA.

WASHROOM

INDUSTRY



## HALL 10

### CELTEX - 10.211



#### Tissue and nonwovens products

Celtex manufactures tissue and nonwovens products dedicated to the fields of professional cleaning, industry, Ho.Re.Ca. and community. A complete range of disposable tissue and nonwoven products supplied with dispensers specifically designed to meet the ergonomic and aesthetic requirements of each professional environment.

Celtex offers its customers a catalogue containing more than 150 products, with more than 400 specific variants, in order to meet even the most complex and specific requirement. Celtex has also launched the new Performance line of tissue products, spearheaded by Easy Wipe: a small, compact, 800-sheet two ply roll made of pure, excellence quality cellulose. This product answers the needs of a wide range of customers that uses these industrial rolls on a daily basis, and thus requires specific sizes and dimensions at a reasonable price.

### CENTRALCARTA - 10.306



#### AFH Tissue paper producer

Since 1990 Centralcarta has been operating as a complete range of disposable tissue and nonwoven products, both in the Away-from-Home, HO.RE.CA. and consumer market. Centralcarta's products are studied to meet even the most complex and specific requirement.

### KROLL - 10.121



#### Cosmetic company

Kroll is a leading Italian company for the production of soaps & cleansers, even in private label, for the personal care. The pivotal factors in Kroll activity include not only a wide range of products, but also technological innovation, R&D, and attention to ecological sustainability.

Oktima Fluidal Ecolabel, white cream gel with microgranules.

Designed to clean working hands. Specially formulated to tackle stubborn dirt, this cream gel is enriched with cleansing raw materials of natural vegetable origin obtained from renewable sources.

### PAPERNET - SOFIDEL GROUP - 10.303



#### Endless Care, Innovative Life.

Sofidel is the second-largest European integrated paper group and ranks sixth worldwide for production capacity. It has a consolidated turnover of 1.7 billion euro, employs over 5400 people and is present in Europe and USA. The Group is leader in the consumer segment with the brands Regina, Softis, Le Trèfle, Sopalin, Inversoft, Nouvelle Soft, Thirst Pockets, Kitten Soft, Soft&Easy, Volare, Onda and Nicky. On the professional market in Europe, it is present with Papernet 'Sustainable Hygiene'. Dissolve Tech behaves like a traditional hand towel when drying hands. If thrown in the WC, it dissolves like toilet paper. Absorbency and strength are comparable to a traditional hand towel. In contact with water, it dissolves in 3 minutes, as demonstrated by the disintegration of tissue products avoiding blockages in sewers and pipes.

## Companies & Products

### VAMA ELETTROTERMOMECCANICA - 1.109



#### Full range of professional hand & hair dryers

Hand dryer Tornado PROtech, Eco Stream.  
High energy saving hand dryers with high  
performances JET type.

## HALL 11

### CARIND - 11.421



Carind first introduced on the European market  
a new processing method of pure cellulose  
wadding and recycled, for the realization of a  
wide range of multipurpose industrial rolls. From  
this technology it has been created the DAILY line  
that, thanks to embossing with opposite drilling  
and gluing of the veils, enhances the typical  
characteristics of the card: strength, softness,  
functionality, convenience, versatility and high  
absorbency.

# UN'AMPIA GAMMA DI PRODOTTI PER OGNI ESIGENZA



#### LENZUOLINI MEDICI

In pura ovatta di cellulosa e non,  
politenati, a uno, due veli, lisci,  
gofrati, collati.

#### ASCIUGAMANI A Z

A uno, due e tre veli, gofrati, collati.  
Funzionali, resistenti, assorbenti.

#### CARTA IGIENICA PROFESSIONALE

A rotolo e jumbo roll.

#### BOBINE SPECIALI

Una nuova tecnologia  
di lavorazione della pura ovatta  
di cellulosa e dell'ovatta riciclata.

#### ASCIUGAMANI A ROTOLO, A SPIRALE

Per tutte le esigenze di igiene  
e pulizia e per tutti i dispenser.

#### TOVAGLIOLI E DISPENSER

In pura ovatta di cellulosa  
a uno o più veli, bianchi e colorati.

HALL 11  
STAND 421



10.11.12.13 MAY 2016 • AMSTERDAM • NL

Un'azienda attenta all'efficienza,  
al design e alla **SOSTENIBILITÀ**.

[www.carindtissue.com](http://www.carindtissue.com)





## Companies & Products

### CARMA PROFESSIONAL - 11.213

 Gruppo Carrara



#### Tissue Producer specialized in AfH products

The 'Business to Business' division deals with satisfying the needs and demands of professional consumers. Particular attention is focused on the following sectors: Ho.Re.Ca., the Office, Industry, Public and Private Health, Entertainment, and Beauty Parlours, offering a wide range of tissue products complete with dispensers and accessories.

All the professional products are manufactured both as own brand and as private label, in order to meet the needs and demands of the customer.

### CARTINDUSTRIA - 11.117

 EURO CARTA



#### Tissue Converting Company

With an over 30 years production experience, Cartindustria works on providing the best solutions for the A.F.H. market: from pure pulp products through mixed qualities, up to the ecological ones. Cartindustria Eurocarta's products range includes C,V,Z,W fold Handtowels, industrial wipers, medical rolls and toilet papers.

### CASALINO CARTA - 11.119



#### Fold Hand Towel

Casalino Carta Srl is a family company present on the market from about 30 year. Company extremely dynamic and flexible for satisfy the customer's request. The company produce parent reels specially in recycled paper that sell on the market and use in his converting. The converting plants is specialized in production of folding Products C-fold, V fold, Z fold, Interleaved toilet tissue all in recycled and Pure pulp 1-2 and 3 ply glued. Parent reels and finished products covered from Ecolabel and FSC certification.

## Companies & Products

### LUCART GROUP - 11.401



#### The evolution of traditional distribution systems

Lucart Professional Identity dispensing system is a new hygiene solution for the Away from Home environment. From handtowels and toilet paper to disposable napkins systems, Lucart Professional Identity range has been designed to guarantee total hygiene as well as reliable and cost effective dispensing solutions. Lucart Professional Identity represents the evolution of traditional distribution systems.

### NETTUNO - 11.413



#### Nettuno gets into HoReCa

The Italian company leader in the production of hand hygiene products, has been promoting their first 800 ml dispensing system for a couple of years. T-Small dispenser complies with HACCP procedures not only because it distributes soap in a hygienic way, avoiding any external contamination, but also because it can be completely disassembled and washable. T-Small dispenser is used with a wide range of TS800 pouches, including Sedygien, a product thought for the food and catering industries. It's a liquid soap free from colourants and fragrances, with an effective sanitizing action. Sedygien was created to satisfy the needs of professionals working in environments subject to HACCP controls.

## Companies & Products

### ORMA - 11.409



#### Air control insecticide

Orma is a company successfully operating in the fields of air freshener and control of flying insects since 30 years.

In this last sector Orma proposes a well known array of products, in which the most important product is certainly the 'Air Control Insecticide' aerosol metered can.

Thanks to its high percentage of Natural Pyrethrum (7%) synergized with Piperonyl Butoxide Air Control is an aerosol insecticide which creates an effective repellent barrier against flying insects like flies and mosquitoes in every environment.

Used with the Orma automatic dispenser Air Control can treat rooms up to 200 mc.

Air Control is a safe product can be applied in food industries as well as public areas like hotels, bars, restaurants and kitchens.

### PACKING 90 - 11.140



#### Washroom dispensers

Hygienic Bag, Cosmetic Box and Cosmetic Cube are washroom dispensers produced by Packing90, an Italian manufacturer of ABS dispensers. The standard versions are white, chrome, satin, black and gold.

They can be customized with any logo, they are compact, elegant, stylish... in 3 words: Made In Italy.

## Companies & Products

### PAPER DIVIPAC - 11.521



#### The world of Tissue

Paper Divipac is an Italian firm dedicated to the production and distribution of Tissue Paper for hygienic, sanitary, cleaning and industrial market. After more than 20 years of market, we are specialized in Industrial Roll, Medical Sheet, Toilet Paper, and in production of all range of Folded Hand-Towel 'C' 'Z' 'W' 'M' 'I' 'V'. All of that it was done, thanks to huge investment we made in the last years. Our main goals are: to pursue growth company, protect and sustainably the environment satisfying the clients.

### PAPERGROUP - 11.517



#### Tissue paper company

Papergroup is specialised in the production of disposable pure cellulose tissue products: toilet paper, paper towel, industrial rolls, napkins, pocket tissues.

Thanks to its converting with 4 folded product lines as well as 3 roll products lines, Papergroup covers AFH as well as consumer sector.

The team has been researching all the time new features, therefore the company is certified with ISO 9001, BRC, Ecolabel and FSC certificates.

### RO.IAL - 11.722



#### Nonwoven and Airlaid Disposable - Made in Italy

Ro.ial is the Italian leading manufacturer of disposable nonwoven and airlaid products, whose production is strongly oriented to best professional wholesalers on the market. Ro.ial products represent the best expression of efficiency and usefulness with the specific aim of fully satisfying all the requests of the final users in terms of hygiene, safety and practicality. The incessant research of the technicians allows Ro.ial to offer always the best at the most competitive conditions.



## Companies & Products

### SANTA GEMMA - 11.326



#### A young but skillfull company

Most of products by Santa Gemma are manufactured with a new innovative system (Double Embossing Synchronised Lamination). The final result is a superior quality product with extra absorbency, high tensile strenght and quick absorbant ratio, all this without influencing the softness and the external appearance of the finished product. The new technologies, added to the most innovative work processings, allows to obtain the top in the production of industrial wiper rolls, hand towel rolls, jumbo toilet paper and medical rolls. All rolls are manufactured utilizing different types of raw material: from pure to mixed cellulose, from top quality recycled to the more economic versions, in white and blue. To a standard range has been added a new line of coreless hand towels and jumbo toilet paper, right for saving space and reducing consumption, and a personalized range that satisfy all customer's requires.

### SANTOEMMA - 11.501



#### Battery machine

Elite-Battery is a battery self-contained machine. Without power cord, it is easy to operate with Elite-Battery in large areas, for example in hotels, shopping centres, airports, convention rooms. Elite-Battery is a very silent extractor, since it works with 60 Decibels only. It is possible to adjust the brush and vacuum head pressure, according to the type of carpet. The water-flow can be regulated, for a maintenance low-moisture cleaning or a restoration deep-cleaning.



## A STROLL THROUGH AMSTERDAM

### Where to stay in Amsterdam

Amsterdam is overflowing with accommodation choices for every type of trip. Whether you're visiting for a romantic weekend, a business trip or a fun holiday with friends, you'll be spoilt for choice with brilliant places to stay in Amsterdam. There's nothing quite like the feeling of waking up in Amsterdam, watching the early morning mist crawl over the canals as the city slowly comes alive to the sounds of bicycles, boats and church bells. Most visitors to Amsterdam choose to stay at least one night in the city - after all, there's far too much to see and do here to fit into just one day.

### Hotels and hostels in Amsterdam

The most traditional - and popular - type of overnight accommodation in Amsterdam is a hotel. Amsterdam hotels range from the basic to brilliant, and there's an ever increasing choice of four and five star accommodation in Amsterdam - ranging from global chains to unique boutique pads oozing with character and charm. If you're looking for an extra unique place to lay your head, check out our pick of 10 unusual hotels in Amsterdam. If you're keeping an eye on your budget, hostels in Amsterdam are a fabulous alternative to hotels and

offer the chance to meet fellow travellers and swap stories. Many hostels enjoy enviable central locations at a fraction of the price of hotels, leaving you with more euros in your pocket for sightseeing!

### Houseboats and homes

More and more people are opting for self-catering accommodation in Amsterdam, allowing visitors to experience life like a local by renting a short-stay apartment or houseboat in the city. There are strict rules around short-stay rental accommodation in Amsterdam, so do be sure to check that your host complies with local laws before booking.



## A Stroll Through Amsterdam



### Explore accommodation in Amsterdam

Take a look below for our extensive pick of places to get a good night's sleep in Amsterdam - ranging from boutique hotels to budget hostels, self-catering apartments and more.  
[www.iamsterdam.com/en/visiting/plan-your-trip/where-to-stay](http://www.iamsterdam.com/en/visiting/plan-your-trip/where-to-stay)  
[www.amsterdam.info/accommodation](http://www.amsterdam.info/accommodation)

### Where to eat

Amsterdam is second to none for restaurants. There is a multi-cultural choice of restaurants which reflect the city's spirit. The restaurants offer the best a hungry visitor could want, from Indonesian cuisine to tapas, Mediterranean to modern Dutch. From international

cuisine to typical local fare, Amsterdam can satisfy your palate. You can find a wide range of eating places on the site: [www.iamsterdam.com/en/visiting/what-to-do/eating-and-drinking](http://www.iamsterdam.com/en/visiting/what-to-do/eating-and-drinking)  
 Here is a small selection.

### Breakfast & Brunch

**Café Americain**, in Leidsekaade 97  
[www.cafeamericain.nl](http://www.cafeamericain.nl)

**Hotel de l'Europe**, in Nieuwe Doelenstraat 2-14  
[www.deleurope.com](http://www.deleurope.com)

**De Bakkerswinkel**, (4 Locali) in Warmoesstraat 69; Roelof Hartstraat 68; Regulatershuis 1, Polonceaukade 1  
[www.debakkerswinkel.com](http://www.debakkerswinkel.com)  
**Flinders Café**, in Frederik Hendrikplantsoen  
[www.flinderscafe.nl](http://www.flinderscafe.nl)

**Gartin**, in Taksteeg 7  
[www.gartine.nl](http://www.gartine.nl)

**Gebroeders Niemeijer**, in Nieuwendijk 35  
[www.gebroedersniemeijer.nl](http://www.gebroedersniemeijer.nl)

**Nielsen**, in Berenstraat 19 -  
[www.nielsen-ontbijt-lunch.nl](http://www.nielsen-ontbijt-lunch.nl)

**Le Pain Quotidien**, in Spuistraat 266  
[www.lepainquotidien.nl](http://www.lepainquotidien.nl)

**Singel 404**, in Singel 404 -  
[www.facebook.com/pages/Singel-404](http://www.facebook.com/pages/Singel-404)

**G's** - in Goudsbloemstraat 91  
[reallyniceplace.com](http://reallyniceplace.com)

### Brown café

Traditional Amsterdam pubs: What's in a name? The name 'brown café' comes from the dark but cosy wooden interiors and

## A Stroll Through Amsterdam



the nicotine-stained walls and ceilings. Even though most cafés nowadays shouldn't really be getting any browner, some of the newer hangouts are carefully decorated to achieve this lived-in look and for many people, their local brown café is an extension of their living room. Several brown cafés claim to be the oldest in Amsterdam, and while there is no hard historic evidence to indicate a clear winner, there are some that can trace their roots back to the early 1600s. Check out I amsterdam's selection of Amsterdam brown cafés and be sure to pay one (or more) a visit when you're next in town.  
 In't Aepjen, Zeedijk 1 – in one of the oldest buildings in the city, founded in 1475.

Café Karpershoek, Martelaarsgracht 2 – with a sand floor, as was normal in the XVII century.  
 Café De Druif, Rapenburgerplein 83 – Apparently "The Grapevine" was opened in 1631.  
 Café Papeneiland, Prinsengracht 2 – It is said that a funeral director and a coffin-maker sold drinks here at the start of the 1600s.  
 De Drie Fleschjes, Gravenstraat 18 – the "Three Bottles" is from 1650.  
 Café Hoppe, Spui 18-20 – famous for its parties which spill out onto the pavement.  
 Café Kalkhoven, Prinsengracht 283 – This café dates from 1670 and is in front of the Westerkerk.  
 Wynand Fockink, Pijlsteeg 31 – here you can try local liqueurs and traditional

Dutch gin.  
 Café In de Wildeman, Kolksteeg 3 – market research in 2013 placed it amongst the top ten bars in the country.  
 Café't Smalle, Egelantiersgracht 12 – The famous Pieter Hoppe opened his distillery here in 1786.  
 Café De Dokter, Rozenboomsteeg 4 – at 18 sq. metres, it is probably the smallest bar in Amsterdam.

### The best 10 restaurants in Amsterdam

**Moeders**, (Mothers) in Rozengracht 251. Is packed with kitsch in the best possible way. The walls of the restaurant are plastered with photos of mothers, and the menu features all the Dutch classics. You can even



## A Stroll Through Amsterdam



order a dinner sampler with a variety of typical dishes on one plate.

**Loetje**, in Stationsplein 10. Take your favourite carnivore to Loetje for what is often claimed to be Amsterdam's best traditional biefstuk and friet (steak and chips). The menu also has a few fish items, but this is no place for vegetarians! [loetje.com](http://loetje.com)

**'t Zwaantje**, Tucked in a side street between two canals, 't Zwaantje is a cosy brown café serving no-nonsense local favourites. Try the suddervlees (stewed beef) for a taste of home-style cooking. [zwaantje-restaurant.nl](http://zwaantje-restaurant.nl)

**Haesje Claes**, Housed in six connected historical

buildings, in Spuistraat 275, Haesje Claes will take your taste buds back in time. The menu is exclusively old-fashioned Dutch food, offering pea soup, fish stew, chicken livers and everything in between! [haesjeclaes.nl](http://haesjeclaes.nl)

**Greetje** in Peperstraat 23-25, Named after the owner's mother, some say that Greetje is the closest you can get to a home-cooked Dutch meal in a restaurant. They often get high marks for their welcoming atmosphere and friendly service. [restaurantgreetje.nl](http://restaurantgreetje.nl)

**Hap-Hmm** in Eerste Helmersstraat 33, this restaurant serves old-fashioned Dutch food with prices to match. Dinners start at just €7.50 and many repeat

customers swear it's "just like grandma used to make". [www.hap-hmm.nl](http://www.hap-hmm.nl)

**De Silveren Spiegel**, in Kattengat 4 -6, offers typical Dutch cuisine with a refined touch. The setting is part of the experience as you enjoy your meal in a historical building under exposed wooden beams. - [www.desilverenspiegel.com](http://www.desilverenspiegel.com) **IJscuypje**, in Helicopterstraat 30, In summer, IJscuypje churns out homemade ice-cream in a variety of delectable flavours. Come autumn, all five branches of the shop are converted into Stampotje, offering a selection of traditional takeaway Dutch meat and potato combos. [www.ijscuypje.nl](http://www.ijscuypje.nl)

# TSmall™

The multifunctional dispenser suitable for any kind of environment



Visit us at **Hall 11, Stand 413**  
ISSA INTERCLEAN Amsterdam



...hand protection, washing, hygiene and care.

**NETTUNO Srl**  
Viale Industria, 16/18  
24060 Castelli Calepio (BG) - ITALY

**NETTUNO IBÉRICA SL**  
Av. de Nisperos, 25 naves 12 y 13  
28350 Ciempozuelos - Madrid - España



[www.nettuno.net](http://www.nettuno.net)

**NETTUNO**  
we take care of your hands



## A Stroll Through Amsterdam



**D'Vijff Vlieghe**, in Spuistraat 294-302, is a well-known location for an elegant Dutch meal. The dining area is spread across a variety of rooms, including one with original etchings by Rembrandt. The menu features modern and creative interpretations using typical Dutch ingredients. [vijffvlieghe.nl](http://vijffvlieghe.nl)

### **Clubbing & Nightlife**

When it comes to nightlife in Amsterdam, there are venues, dance festivals and club nights to suit every taste! DJs keep the crowd going with everything from techno, dub step and trance to hip-hop, funk and deep house. [www.iamsterdam.com/it/visitare/whats-on/clubbing-nightlife-amsterdam](http://www.iamsterdam.com/it/visitare/whats-on/clubbing-nightlife-amsterdam)

### **Getting around the city**

Amsterdam boasts an impressive public transport network including metros, buses, trams, ferries and trains to help you get around the capital. The I amsterdam City Card gives you unlimited use of the GVB public transport system for 24, 48 or 72 hours. [www.iamsterdam.com/it/i-am/i-amsterdam-city-card](http://www.iamsterdam.com/it/i-am/i-amsterdam-city-card)

### **Amsterdam - a shopper's dream**

A city reputed for its innovation and creativity, Amsterdam is home to many established and budding fashion talents. From the club scene to the catwalk, the city is a source of inspiration for stylish individuals. In addition to all the big brands, fashion

chains (on Kalverstraat and Leidsestraat) and international designers, Amsterdam boasts numerous up-and-coming Dutch designers and independent shops. The city is also big on denim, being home to multiple denim brands, shops and designers. [www.iamsterdam.com/en/visiting/what-to-do/shopping](http://www.iamsterdam.com/en/visiting/what-to-do/shopping)

### **Shopping areas in Amsterdam**

There are many places in and around the city to get your retail fix - with different areas offering different shopping experiences. Here's I amsterdam's guide to the best places to hit the shops in Amsterdam. The Nine Streets (De Negen Straatjes) Located in the heart of the

## A Stroll Through Amsterdam



city's historic canal district, this area of nine narrow streets called the Negen Straatjes was constructed during the 17th century. The Nine Streets intersect the main canals between the Leidsestraat and the Jordaan district, and are dotted with great restaurants, cafés, art galleries, jewellers, boutiques and vintage stores. With an exceptional array of styles, trends and prices, this area is truly a shopper's paradise.

### **Neighbourhood markets in Amsterdam**

Amsterdam's markets abound with the vibrant colours, smells and sights that define this multicultural city, meaning open-air markets are one of the best ways to soak up the local culture. So go for a stroll

and discover the village atmosphere of the city's neighbourhood markets, most of which are open year-round, rain or shine. [www.iamsterdam.com/en/visiting/what-to-do/shopping/amsterdam-markets](http://www.iamsterdam.com/en/visiting/what-to-do/shopping/amsterdam-markets)

### **Shopping with the locals in Amsterdam**

Amsterdam has a number of lively neighbourhood markets filled with food, flowers, clothes, housewares and other bits of kitsch. Open six days a week (Monday to Saturday), you can sample local snacks, pick up the daily necessities and rub shoulders with the locals at the Albert Cuypmarkt, Dappermarkt, Nieuwmarkt or Ten Katemarkt.

### **From fine art to kitsch**

Contemporary art, abstract art, glassmaking art: Amsterdam has a multitude of art galleries where you can not only admire the works on show, but also buy them. To visit the small galleries hidden among the canals means to immerse yourself in the exciting discovery of the most varied artistic techniques and styles. The majority of the art galleries are in the picturesque lanes (for example the Spiegelstraat), which are worth a visit in themselves.

### **The Spiegelkwartier quarter**

The Spiegelkwartier quarter is situated in the area which extends in front of the Rijksmuseum National Gallery. In it, there are about



## A Stroll Through Amsterdam



70 antique shops and art galleries. In some of them you will find experts from the famous Dutch television programme Tussen Kunst en Kitsch. It doesn't matter if you're looking for an authentic Karel Apple, an art deco ring, a decorated ceramic tile in the famous blue Delft or glass objects in the Roman style, you'll find what you want in these streets.

### Shop opening hours

The majority of businesses and shops are open from Tuesday to Friday from 9.00 to 18.00. On Saturday, shops are usually open from 9.00 to 17.00. On Mondays, businesses open at 13.00 (big department stores at 11.00). In the centre of Amsterdam, the shops are open until 21.00 on Thursdays. On

Sundays, they open from 12.00 to 19.00.

### WHAT TO SEE

A walk through the centre of Amsterdam and its surrounds will reveal the numerous tourist attractions of a city rich in history and fascination. Tourist attractions in the city Anyone who arrives at the Central Station gazes in open-mouthed amazement at the so-called "palace of bikes", a favourite of photographers, where thousands of people park their bikes every day before taking the train. Heading south from here you arrive in the swarming Piazza Dam. The Royal Palace faces onto it on the west side and to the north the ex cathedral Nieuwe Kerk. To the east you

can admire the national memorial to the victims of the second world war. Go along the commercial Kalverstraat to Spui, a small piazza where there are art and book markets every week. Look for the lane which will take you to Begijnhof, the "Beguines Court", a hidden oasis of absolute peace surrounded by the houses of unmarried women who dedicate their time to religious observance, but who are not nuns. There is also a delightful, small chapel, absolutely worth a visit.

### The canals

Spreading out from this nucleus is a series of concentric, intersecting canals, also known as the Grachtengordel. Bordered by the typical, famous old



# klindex®

FLOOR TREATMENT SPECIALIST

Hall 4-5 Stand O4.II5



10.11.12.13 MAY 2016 • AMSTERDAM • NL



- 100% Made in Italy
- Remote control operated
- Metal gear transmission box
- Adjustable work pressure
- Front transportation wheel
- Available in 6/4/3 heads
- High performance with DCS
- Exclusive Quick Attack tools
- Industrial Dust extractors





**Klindex is the choice of top flooring professionals.**

Floor grinders • Dust extractors • Diamond tools • Burnishing machines • Chemicals • Floor Solutions





## A Stroll Through Amsterdam



Amsterdam houses, they have retained their beauty to this day. This is not only a perfectly preserved open-air museum but also the efficient but welcoming heart of the city.

The canals are surrounded by churches and other points of interest for the tourist which can also help to orientate you in the city streets. The bell tower of the Westerkerk with its strange blue crown on the top is the highest monument in Amsterdam. It dominates the skyline and near it are the House of Anne Frank and the monument to homosexuality Homomonument. Following the canals in a south-east direction from here, you can find the characteristic quarter with restaurants and shops called De 9 Straaties (the 9 streets). Pushing

further on, you can cross humped bridges, find little streets full of bars with outside tables and amazing architecture.

### Something to suit all ages

Amsterdam is full of tourist attractions to suit the tastes of everybody, families, children, young and not so young. You can visit Madame Tussauds with wax figures of the most famous heroes and celebrities. You will wonder out loud, "how can they make them so lifelike?". Or visit Amsterdam Dungeon and be spellbound by the city's impressive dark past. Roll up your sleeves at the NEMO museum of science, where there are games and educational activities as well as a spectacular view of

the city from the top floor (which becomes a town beach in the summer). There is a life-size replica of the ship "Amsterdam" which belonged to the East India Company moored in front of the museum. Artis is the city zoo and is a favourite at all times of the year for animal lovers.

This is only a small selection of the hundreds of tourist attractions which Amsterdam offers to the visitor. Find out about the places and attractions to suit you from among the following.

### Attractions and monuments in Amsterdam

**Amsterdam is full of world-famous museums. A visit to the city is not**

## A Stroll Through Amsterdam



**complete without seeing the Rijksmuseum, the Van Gogh museum and Anne Frank's house. But there are many other treasures apart from those in the major art institutions. There is a cat museum and a permanent collection of bags, photographs, archaeology and many others. Amsterdam has museums to suit every taste.**

### Amsterdam museums

#### Rijksmuseum

As well as being a national treasure in its own right, the Rijksmuseum's internationally revered collection features some of the most famous national treasures in Amsterdam and the Netherlands, including historic art by Vermeer, Frans Hals, and perhaps

most notably Rembrandt's 'The Night Watch', which takes pride of place in a beautifully lit hall allowing visitors to enjoy every tiny detail.

#### Van Gogh Museum

The Van Gogh Museum in Amsterdam is one of the most popular museums in the world, attracting visitors from every corner of the globe. Naturally, this is in large part due to it housing the largest collection of works by Vincent van Gogh - more than 200 paintings, 500 drawings and 700 of his letters. Having originally opened on Museumplein in 1973, the Van Gogh Museum has been expanded and modernised over the years, ensuring it's a truly cutting-edge exhibition and visitor space.

#### Stedelijk Museum.

A visit to the Stedelijk Museum takes the visitor on a journey through the last 150 years of art, presenting the best of modern art in Amsterdam. Iconic works by Karel Appel, Cézanne, Chagall, Marlene Dumas, Kandinsky, Edward Kienholz, De Kooning, Koons, Malevich, Matisse, Mondrian, Picasso, Pollock, Gerrit Rietveld, Warhol and many others are on show. The Stedelijk Museum's design collection also traces the history of design from the turn of the last century to the present, showcasing furniture, ceramics, posters, jewellery and other objects.

#### Anne Frank House

Anne Frank is one of Amsterdam's most well known former residents.



## A Stroll Through Amsterdam



**The Anne Frank House**  
at Prinsengracht 263 in Amsterdam is where she lived in hiding with her family for more than two years during World War II. Now converted into a museum it contains a sobering exhibition about the persecution of the Jews during the war, as well as discrimination in general.

### **Hermitage Amsterdam**

The Hermitage Amsterdam is the Dutch branch of the world-famous Hermitage museum in Saint Petersburg, Russia. Located on the banks of the Amstel River, the Hermitage Amsterdam is an exhibition space and cultural education centre with a focus on Russian history and culture.

### **Foam**

Foam is an internationally renowned Amsterdam museum that exhibits all genres of photography in a beautiful canal-side setting. As well as displaying a wide variety of works, it acts as a creative hub where photographers can meet and participate in forums and symposiums.

### **The houses on the canals**

Walking along the Amsterdam canals, you discover the hidden gems of the city. The elegant mansions along the canals house some of the most fascinating city museums with collections varying from the majestic to the eccentric which include everything from antique objects to avant-garde works of art. Free entry with an Amsterdam City Card.

### **Het Grachtenhuis (Museum of the Canals)**

A visit to the Museum of the Canals (Het Grachtenhuis) is the perfect way to learn more about the history of Amsterdam's Canal Ring. The museum looks at the 17th-century city expansion projects that led to Amsterdam's ring of canals which received UNESCO world heritage status in 2010. After seeing the interactive displays, you'll look at Amsterdam in a whole new light when wandering through the city's streets or taking a canal cruise.

### **Museum Van Loon**

Museum Van Loon, the former house of the regent Van Loon family, is situated in the heart of the Amsterdam Canals. Willem



## Smart Pack & Kit

100% guaranteed clear cost  
in a little space



ARCO CHIMICA SRL  
Via Canalazzo 22/24 - 41036 Medolla (Italy)  
tel. +39 0535 58 890  
info@arcochimica.it - www.arcochimica.it





# A Stroll Through Amsterdam

van Loon was in 1602 co-founder of the Dutch East Indian Company. The house was designed in 1672 by architect Adriaen Dortsman. The first inhabitant of the house was Ferdinand Bol, a student of the famous painter Rembrandt. In the rooms one finds beautiful portraits, impressive pieces of furniture and silver and porcelain from different centuries.

## Museum of Bags and Purses

Travel through time, history and fashion as you explore the impressive collection of handbags and accessories at the Museum of Bags and Purses. As the world's only museum with such an extensive and specialised collection, it tells the story of the humble handbag from the late Middle Ages to the present day.

## Willet-Holthuysen Museum

The Willet-Holthuysen Museum in Amsterdam had an interesting start. In 1895 Mrs. Willet-Holthuysen

bequeathed her 17<sup>th</sup>-century canal house to the city of Amsterdam in her will, on the condition that it was preserved and opened as a museum. Her wish has been faithfully observed for over a century - the house has been turned into a beautiful museum.

### Museo Ons' Lieve Heer op Solder (Nostro Signore dell'Attico)

**Museum Ons' Lieve Heer op Solder**  
Tucked away in the heart of Amsterdam's inner city lies a small marvel: Our Lord in the Attic Museum. Explore the narrow corridors of this uniquely preserved seventeenth-century house and climb the stairs to discover living rooms, kitchens and bedsteads furnished in Dutch Golden Age style, leading up to the literal highpoint of the museum: an entire church in the attic.

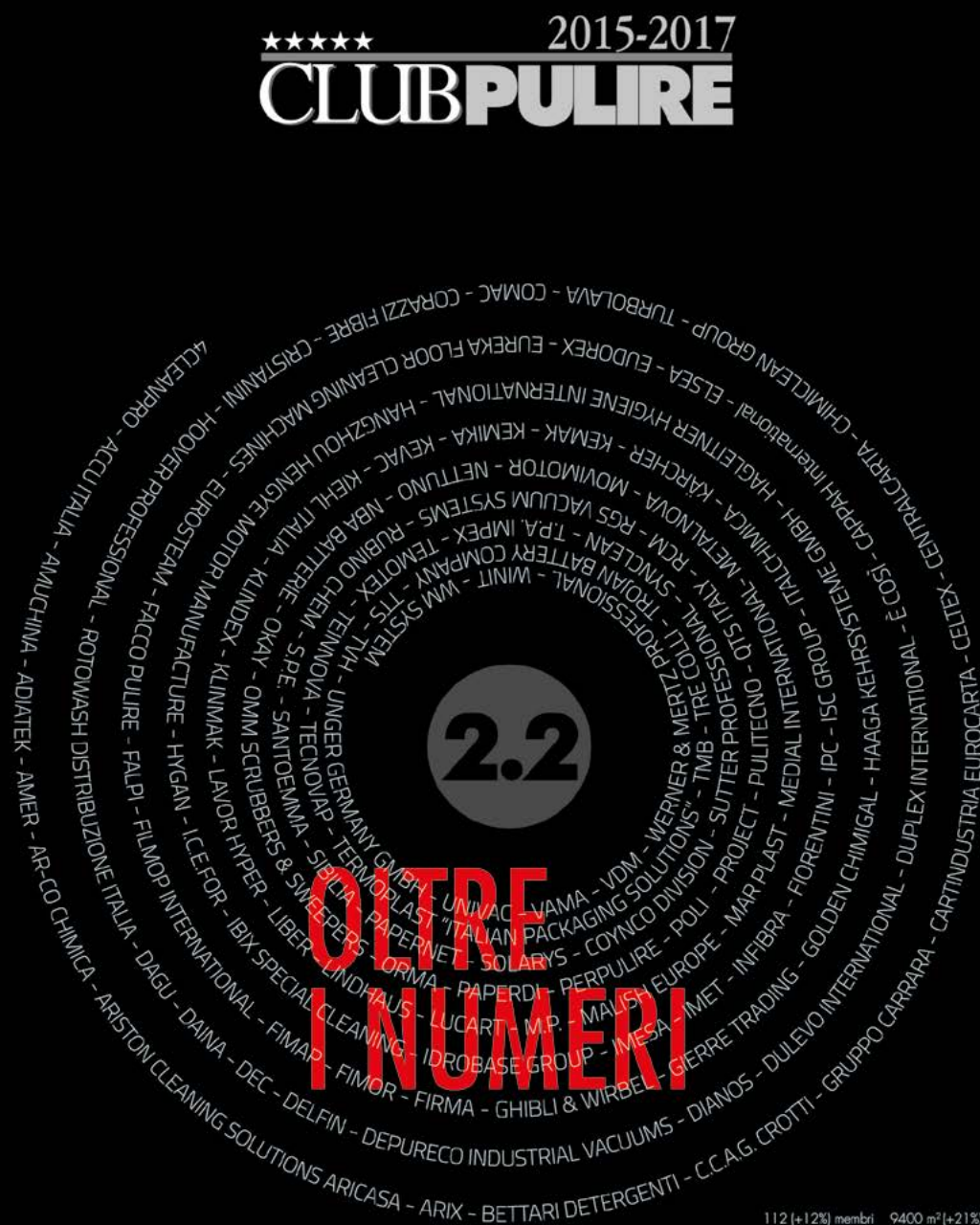
## Biblical Museum

One of the oldest museums

in the Netherlands, the Biblical Museum brings the stories of the Bible as well as Biblical scholarship and archaeology to life. It is home to a large collection of ancient Jewish and Egyptian religious artefacts. Museum highlights include a reconstruction of the Tabernacle tent that is said to have housed the Ark of the Covenant and a first-rate collection of Bibles, including the oldest printed Bible in the Netherlands.

**Museum Geelvinck,**

In 1687, Albert Geelvinck commissioned the construction of the Geelvinck Hinlopen Huis to celebrate his marriage to the much younger Sara Hinlopen. Geelvinck came from a very wealthy family, and his private canal mansion now houses the opulent Museum Geelvinck. Enter through the former coach house and the lush secluded garden to experience the hidden wealth of Amsterdam's former bourgeois elite.



VERONA 23-25 MAGGIO 2017



# COMMERCIAL CLEANING & HYGIENE

The Middle East's Cleaning Expo

## RAISING STANDARDS IN HYGIENE



REGISTER FOR FREE ENTRY AT  
[www.middleeastclean.com](http://www.middleeastclean.com)

23 - 25 MAY 2016  
DUBAI WORLD TRADE CENTRE

### SPONSORS AND SUPPORTERS

Endorsed By:



Bag Sponsor:



Strategic Knowledge Partner:



Part Of:



Featured Exhibitors:



Supporting Associations:



4PUNTOZERO Srl

EDIGITORIA

20125 Milano - Italy  
Via Ressi, 28  
Tel. +39 02 3926 5461  
Fax +39 02 45497579  
info@cleaningcommunity.net  
[www.cleaningcommunity.net](http://www.cleaningcommunity.net)

# Just a click!

[www.cleaningcommunity.net](http://www.cleaningcommunity.net)

**HALL 01.112**



10.11.12.13 MAY 2016 • AMSTERDAM • NL